

Business Performance Services



**Lytec 2014 SP1
Release Notes**

February 2014

Produced in Cork, Ireland

Copyright notice

Copyright © 2014 McKesson Corporation and/or one of its subsidiaries. All Rights Reserved.

Use of this documentation and related software is governed by a license agreement. This documentation and related software contain confidential, proprietary, and trade secret information of McKesson Corporation and/or one of its subsidiaries, and is protected under United States and international copyright and other intellectual property laws. Use, disclosure, reproduction, modification, distribution, or storage in a retrieval system in any form or by any means is prohibited without the prior express written permission of McKesson Corporation and/or one of its subsidiaries. This documentation and related software is subject to change without notice.

Publication date

February 2014

Produced in Cork, Ireland

Product

Lytec[®], Release 2014 SP1

Corporate address

McKesson Corporation
1145 Sanctuary Parkway
Alpharetta, GA 30009
404-338-6000

Table of Contents

Chapter 1 - Enhancements	1
Lytec MD Server and Client	1
Encoder Pro	1
Diagnosis codes	2
CMS-1500 claim form	6
McKesson Practice Interface Center 2.1	7
Chapter 2 - Resolved Issues	9

Chapter 1 - Enhancements

This chapter presents a high-level description of the following enhancements to the Lytec® system.

In this chapter

Topic	See page
Lytec MD Server and Client	1
Encoder Pro	1
Diagnosis codes	2
CMS-1500 claim form	6
McKesson Practice Interface Center 2.1	7

Lytec MD Server and Client

Lytec MD 2014 SP1 comes with many clinical enhancements. For more information on the new features, see the documentation provided on your installation DVD or at the following Internet addresses:

For customers	https://mckwiki.mckesson.com/pps-lytec-central/documentation
For value-added resellers	https://mckwiki.mckesson.com/pps-var-central/Lytec%20Documentation

Encoder Pro

Encoder Pro is purchased separately from Lytec. Contact your Value Added Reseller for information on purchasing Encoder Pro.

You can now map ICD-10 codes to ICD-9 codes using Encoder Pro and bring back both the ICD-9 and ICD-10 codes to create a new code in the Lytec Diagnosis table.

- You can create a new code with just an ICD-10 with no ICD-9 mapping.
- You can also continue to create a new code with an ICD-9 with no mapping as in previous functionality.

New Icon

There is a new icon on the Encoder Pro screen, the 9 icon. This icon will be enabled when you select an ICD-10 code with an ICD-9 mapping.

Clicking it will open a screen on which you can select an ICD-10 code to map. Tabs on this screen allow you to use either GEM or OPTUM (two different data mapping options) to find and select the appropriate code to map.

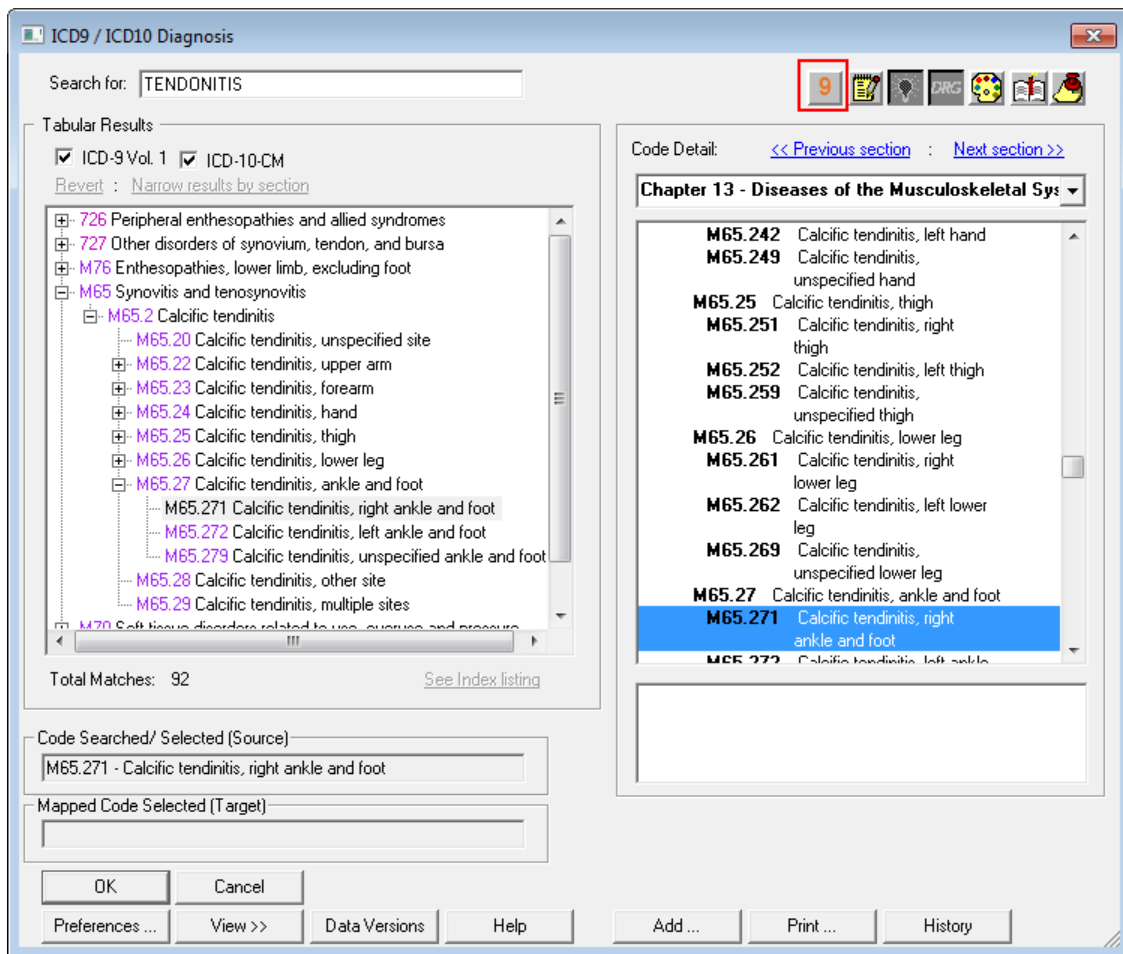


Figure 1. ICD9/ICD10 Diagnosis screen in Encoder Pro

When you click the OK button on the main Encoder Pro screen, the ICD-10 code will be added in Lytec and it will be mapped to the ICD-9 code.

All current functionality for choosing an ICD-9 or ICD-10 code remains the same. Encoder Pro will only add a diagnosis to the Diagnosis List if you choose a mapped code.

The new code will be added with either the ICD-9 code as the Code or the ICD-10 code as the Code based on the Default new diagnosis version field on the General tab in Preferences.

Diagnosis codes

With Lytec MD, Lytec will no longer send the Diagnosis table items from Lytec to Lytec MD due to MD enhancements and changes in Diagnosis functionality. To ensure that HL7 messages coming from Lyted MD do not contain diagnosis codes that do not exist in Lytec, resulting in errors in Pending Transactions, Lytec will analyze the codes in the messages and add them to the Lytec diagnosis table when needed, before the charges are added into Pending Transactions.

Based on the Medical records coding in MD, a message may come in with both an ICD-9 and an ICD-10 attached to one procedure, or an ICD-10 only, or just an ICD-9. Prior to updating the charges in Pending Transactions, Lytec will look for an exact match between the code(s) in the message and an existing record in Lytec Diagnosis table in the following way.

Revised functionality in Pending Transactions

Lytec will process diagnosis codes coming from Lytec MD that appear on the Pending Transactions screen in the following way.

- Search for an active code, either ICD-9 or ICD-10.
- If an active code is found, use the first one found alphabetically (numbers come first).
- If no active code is found, search for an inactive code.
- If an inactive code is found, use it and display a warning on the Pending Transactions screen. The inactive code must be manually reactivated.
- If no inactive code is found, add the code to the Diagnosis Code list. If the ICD-10 code exists but is not paired with an ICD-9, Lytec will add the ICD-10 code with an A appended to it. It will not update an existing code. So in this example the existing ICD-10 code will not get updated with the ICD-9 in the message. Instead, a new code is added to exactly match the codes in the message. Codes are not updated, since there are multiple ICD-10s and ICD-9 matches and if an existing code was updated that could incorrectly assign a diagnosis to a patient where that code had previously been used.

Example

There is an ICD-10 code O64.1xx0 in the Lytec Diagnosis Codes screen with no ICD-9:

The screenshot shows the 'Diagnosis Codes' window. The 'Diagnosis Code' field is populated with 'O64.1xx0'. The 'ICD-10 Code' field in the mapping section is also populated with 'O64.1xx0'. The 'Inactive' checkbox is unchecked. The window includes standard navigation and action buttons on the right side.

Figure 2. Diagnosis Codes screen

A transaction with the following codes is sent to Lytec: ICD-9 = 669.60 and ICD-10 = O64.1xx0. Lytec will create a new ICD-10 code with an A appended and match the ICD-9 code to it. In addition, the new code O64.1XX0A will appear in Pending Transactions.

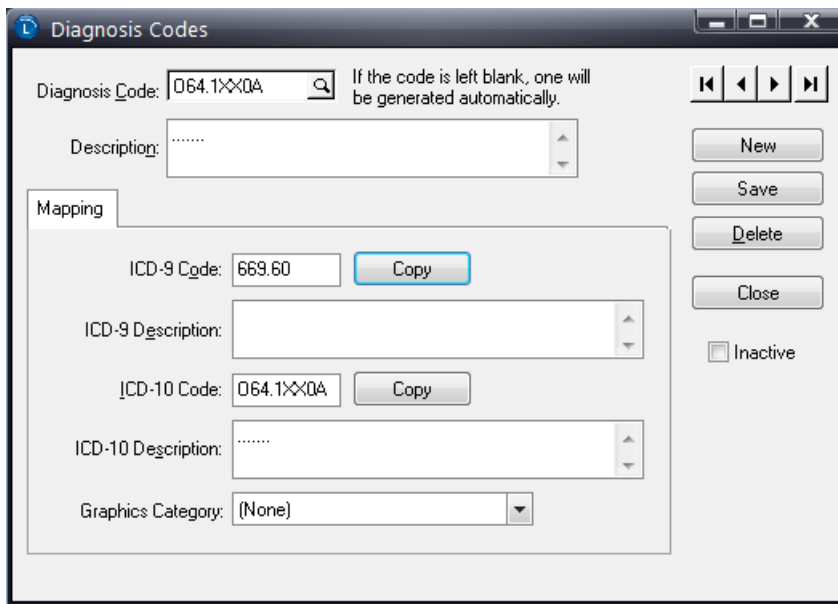


Figure 3. Diagnosis Codes screen

Note: Lytec created an ICD-10 code because the Default new diagnosis version field on the General tab in Preferences was set to ICD-10.

Codes will be added based on the selection in the Default new diagnosis version field on the General tab in Preferences.

Example

The following diagnosis code is going to be added.

ICD-9 = 123.45

ICD-10 = ABC.DE

If Default new diagnosis version field is set to ICD-9, the resulting new code will be as follows:

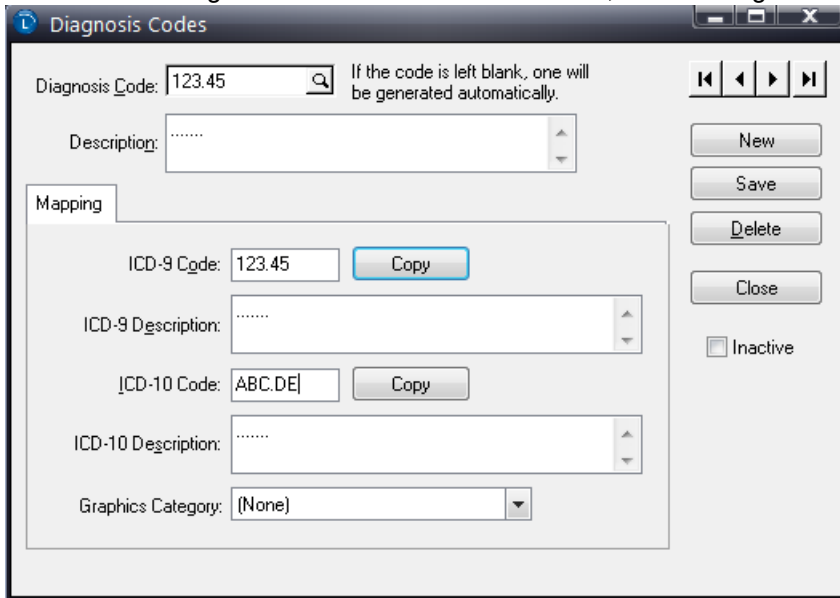


Figure 4. Diagnosis Codes screen

If the Default new diagnosis version field is set to ICD-10, the resulting new code will as follows:

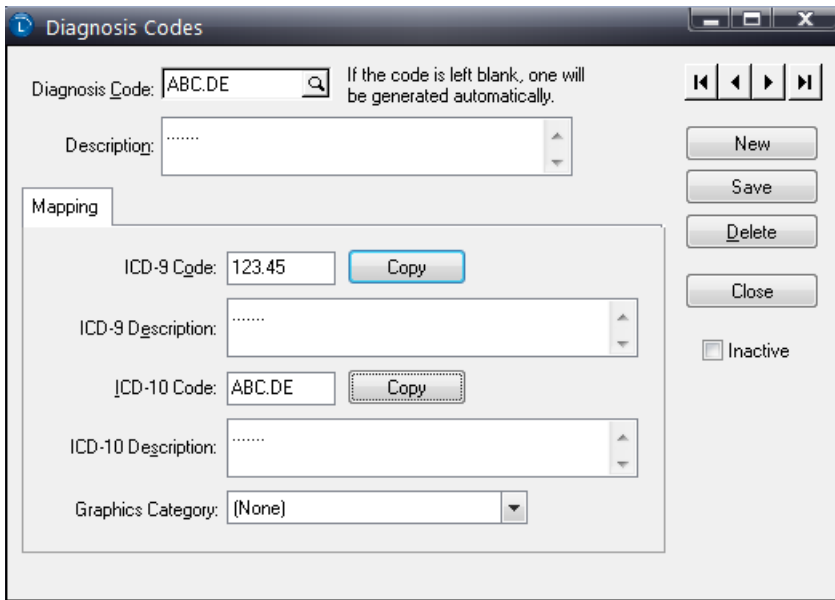


Figure 5. Diagnosis Codes screen

Note: Descriptions will be added as well.

Revised Initialize Data screen for McKesson Practice Interface Center

The Synch Dx Codes check box has been removed for Lytec 2014 SP1 when practices are synchronizing Lytec to Lytec MD. Diagnosis codes are now added as needed with inbound charge messages from Lytec MD to Lytec Client.

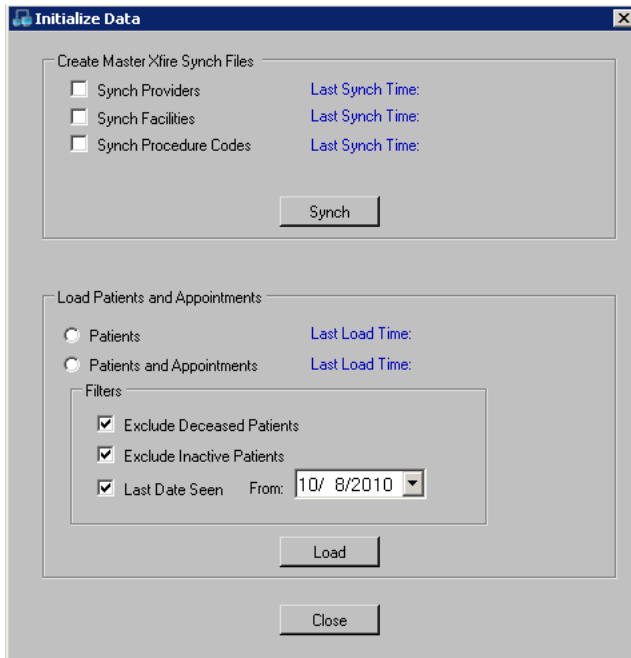


Figure 6. Initialize Data screen

Race Field

Although both Lytec Client and Lytec MD allow you to enter two values for Race, Lytec MD only take an update on the first value.

CMS-1500 claim form

Changes for new requirements

The following changes have been made to comply with new and existing requirements.

Box	Box Description	Change on Form
4	Insured's Name	When Medicare is the secondary insurance: If the primary insurance subscriber name is different than the patient's name, Lytec will print the primary subscriber's name. If the primary and secondary subscriber name is the same, Lytec will print SAME.

Box	Box Description	Change on Form
7	Insured's address	When Medicare is the secondary insurance: If the primary insurance subscriber address is different than the patient's address, Lytec will print the primary subscriber's address. If the primary and secondary subscriber address is the same, Lytec will print SAME.
9	Other Insured's Name	When the primary insurance type is Medicare and secondary insurance is Medicaid, Lytec will leave this box blank. Otherwise, the current rules apply.
9a	Other Insured's Policy	When the primary insurance type is Medicare and the secondary insurance is Medicaid, Lytec will leave this box blank. Otherwise, the current rules apply.
9c	Reserved for NUCC use	When the primary insurance type is Medicare and the secondary insurance is Medicaid, Lytec will leave the box blank. Otherwise, the current rules apply.
9d	Insurance Name	When the primary insurance type is Medicare and the secondary insurance is Medicaid, Lytec will leave the box blank. Otherwise, the current rules apply.
10d	Claim Codes	If the primary insurance type is Medicare and the secondary insurance type is Medicaid, Lytec will print MCD preceded by the Medicaid policy number.
11	Insured's Policy Group or FECA number	If the primary insurance type is Medicare, Lytec will print NONE.
14	Date Current Illness Injury or LMP	If the insurance is Medicare (primary, secondary, and so on), Lytec will not print a qualifier in the qualifier part in box 14 There is no change for the date.

McKesson Practice Interface Center 2.1

McKesson Practice Interface Center is downloaded separately from Lytec.

Lytec 2014 SP1 requires McKesson Practice Interface Center version 2.1. If you are currently using McKesson Practice Interface Center, you must upgrade to the latest version after you install Lytec. You can find the installation file here:

Version	URL
Lytec 32-bit	http://www.lytec.com/MPIC/MPIC-Setup32.exe
Lytec 64-bit	http://www.lytec.com/MPIC/MPIC-Setup64.exe

Chapter 2 - Resolved Issues

The following issues were resolved with Lytec Release 2014 SP1.

Test Defect #	Application	Description
23752	Core	<p>The Small Balance Write-Off feature will now correctly generate an accurate report of bills to write off. Previously, it would not process date and amount selections properly.</p> <p><u>Steps to recreate</u></p> <ol style="list-style-type: none">1. On the Payments menu, select Small Balance Write Off. The Print Small Balance Write Off screen appears.2. Enter your criteria and click the Print button.3. Verify that the report is accurate.

